

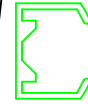
Abdeckung

Acryl (Plexi) –Vorderblende
r=55 mm, 270 Grad geschlossen

Führung

C-4 kt Profil 20x24 Aluminium

F15



Umlenkrohr

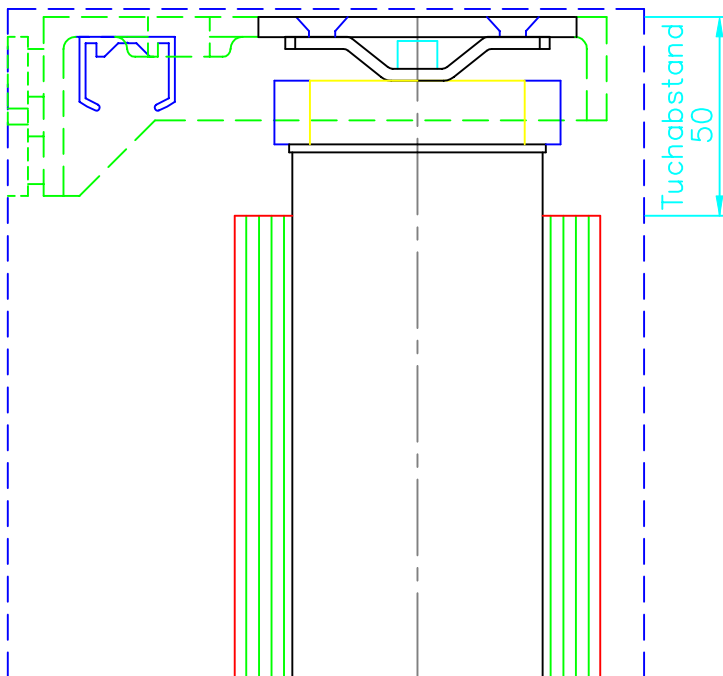
Aluminium D=40

Ausfallrohr

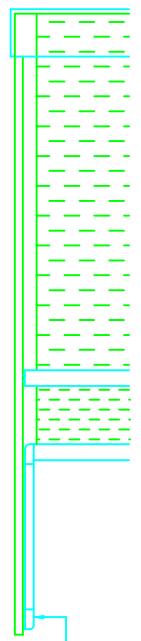
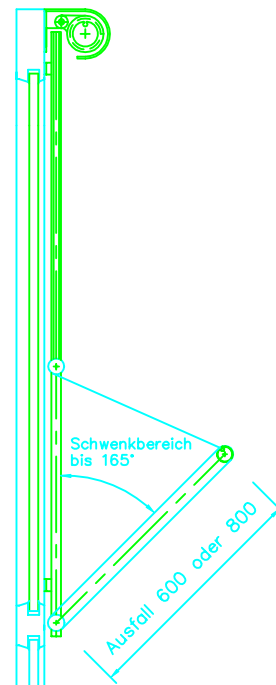
Nutrohr 40x1.5 Aluminium

Markisoletten- garnitur

Arme: Ovalprofil 22x42 Aluminium
mit innenliegendem pat. Federspann-
system, Höhenanschlag mit integr.
Hochschlagsicherung



M 1:2



Höhen-
anschlag
variabel
einstell-
bar

M 1:20